



Integrated Solutions for Responsible Sourcing ProTerra Standard V5.0 and MRV Standard V1.0

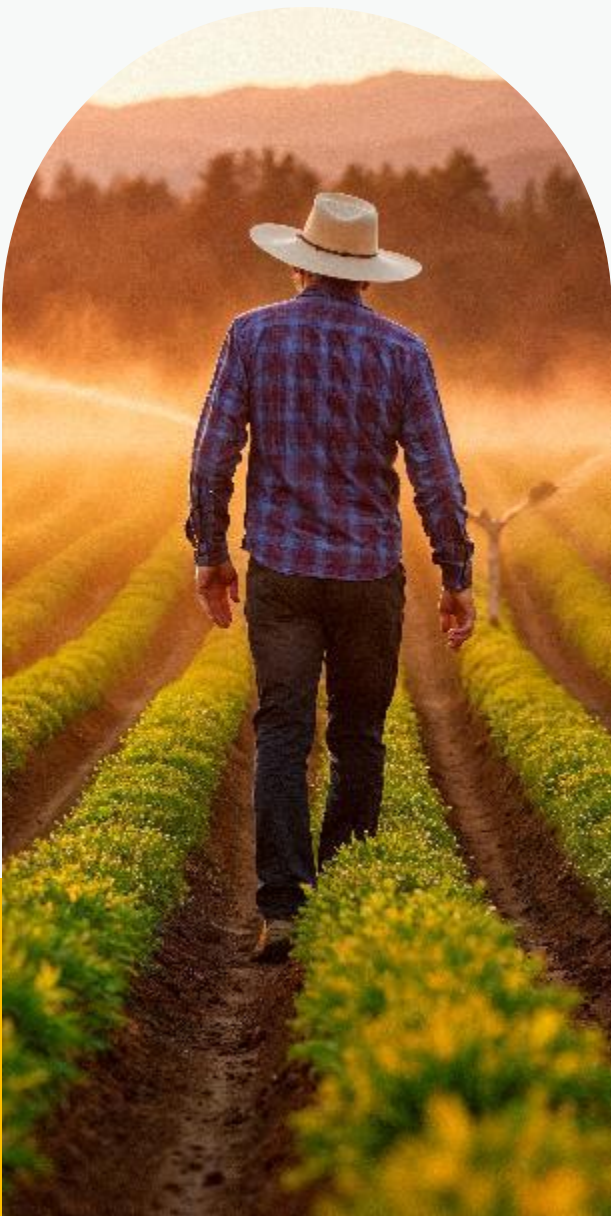


Who we are

The ProTerra Foundation is a non-for-profit organization, located in the Netherlands.

We envisage a world where all businesses:

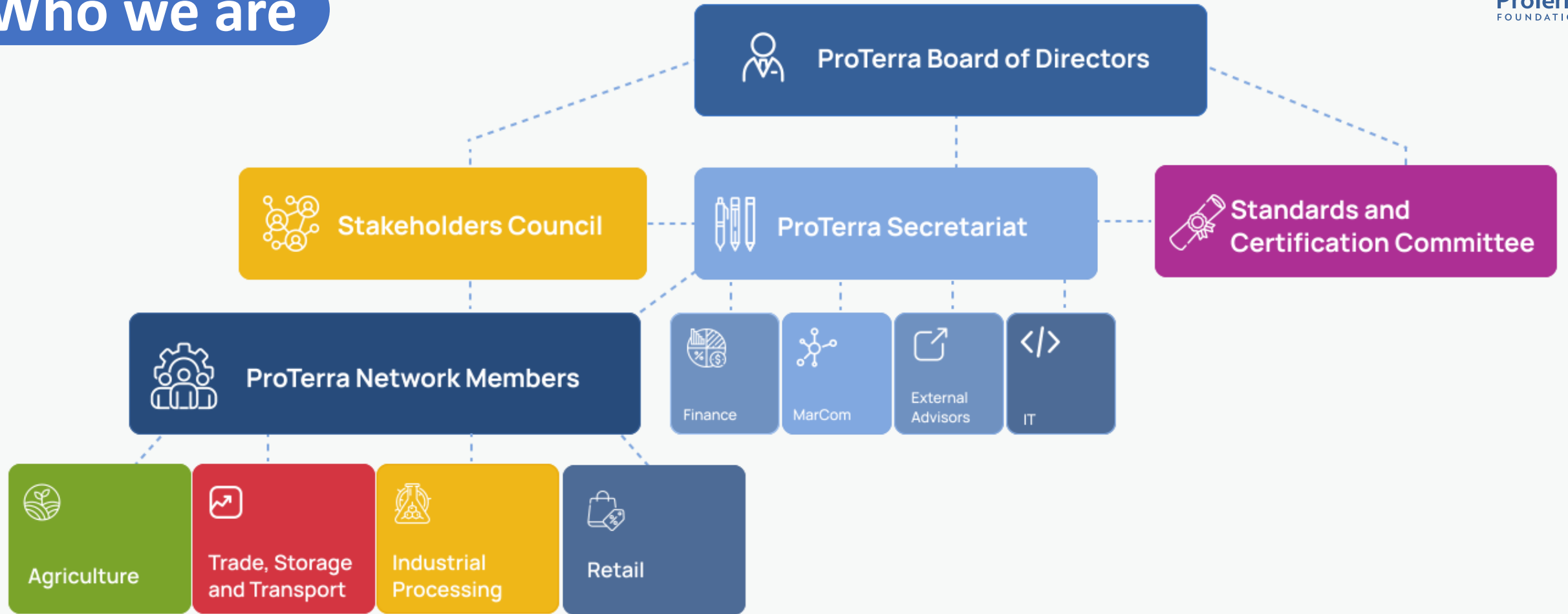
- ❖ All companies should contribute to the protection of biodiversity by switching to sustainable production;
- ❖ Conserve natural resources; and
- ❖ Ensure that workers and local communities are treated with dignity and respect.



www.proterrafoundation.org



Who we are



Who we are

ProTerra Foundation is the owner of the ProTerra Certification Standard and its Interpretations:

- ▶ ProTerra Foundation Standard V5.0
 - ✕ *ProTerra Europa*
 - ✕ *ProTerra Smallholders*
- ▶ ProTerra Insecta
- ▶ ProTerra MRV (Monitoring and Verification) V1.0
- ▶ ProTerra Regenera – Add on module

ProTerra Standards specialise in promoting social and environmental sustainability through the food and supply chains.

<https://www.proterrafoundation.org/the-proterra-standard/>

<https://www.proterrafoundation.org/the-mrv-standard/>





All levels of
certification



All raw materials,
products and by-products



Globally applicable

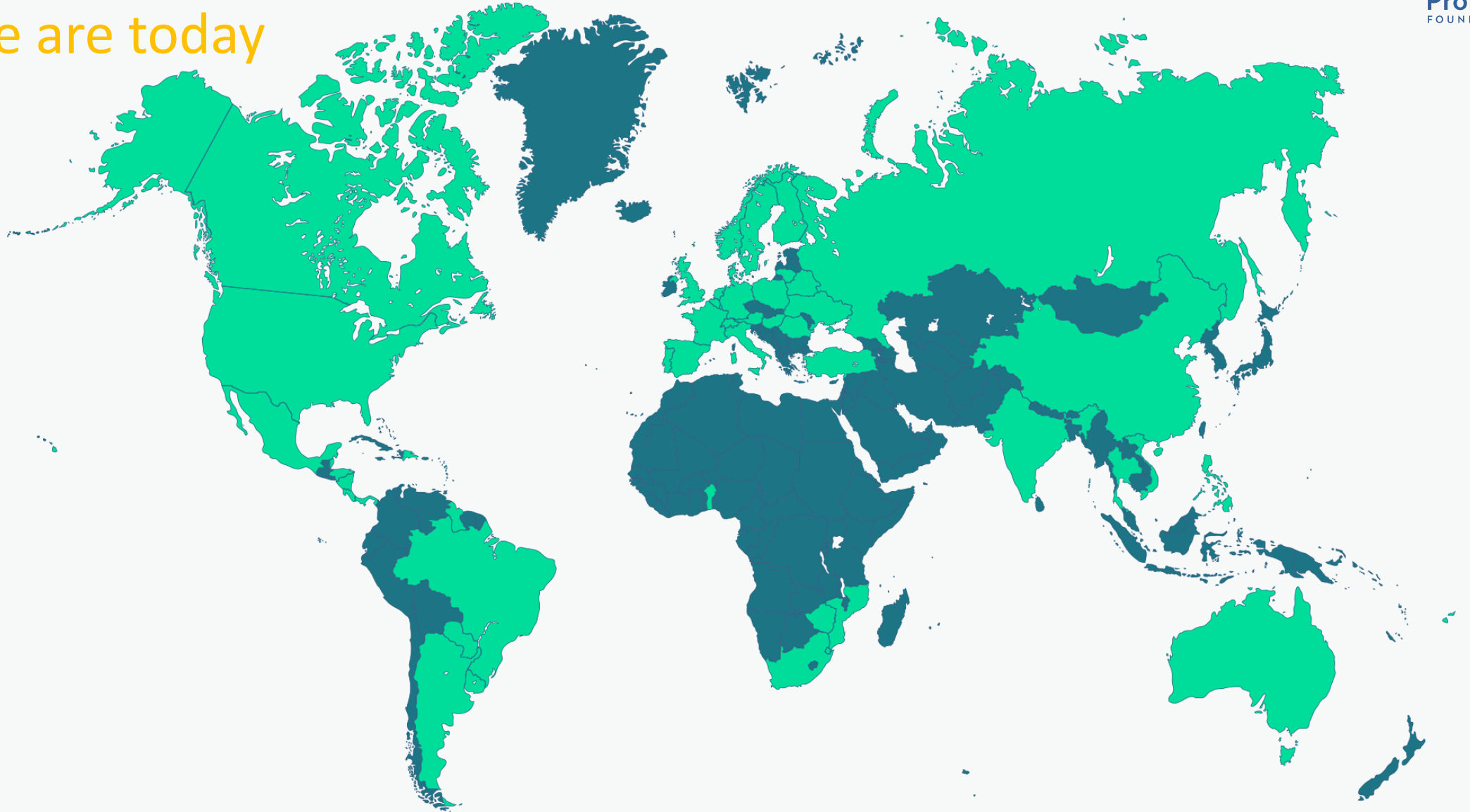
ProTerra Solution

The ProTerra Standards provide a comprehensive sustainability framework encompassing environmental, social, and economic dimensions. Designed to be applicable across the globe, they provide clear, practical guidance for the sustainable production and sourcing of all crop types, regardless of region or scale.



The ProTerra Foundation

Where we are today



Argentina, Australia, Austria, Belarus, Belgium, Belize, Benin, Brazil, Canada, China, Denmark, Dominican Republic, Eswatini, Fiji, Finland, France, Germany, Guadelupe, Guyana, Honduras, Hungary, India, Italy, Lithuania, Luxembourg, México, Mozambique, Netherlands, Nicaragua, Norway, Panama, Paraguay, Philippines, Poland, Portugal, Romania, Russia, South Africa, Spain, Sweden, Switzerland, Thailand, Turkey, Ukraine, United Kingdom, United States, Uruguay, Vietnam, Zimbabwe.

The ProTerra Standards

Key Figures for Soy 2024



CERTIFIED SOY VOLUME

TOTAL 2022	2.392.431,51
TOTAL 2023	2.533.321,24
TOTAL 2024	1.926.970,88

MRV VERIFIED SOY VOLUME

TOTAL 2024	684.568,00
------------	------------

The ProTerra Standards

Key Figures for Sugarcane 2024*



SUGARCANE ANNUAL CRUSH (mt)					
2022		2023		2024	
■	43.626.756,76	■	43.086.555,24	■	60.249.608,02
■	10.081.760,12	■	9.721.763,94	■	7.681.618,62
Total	53.708.516,88	Total	52.808.319,18	Total	67.931.226,64

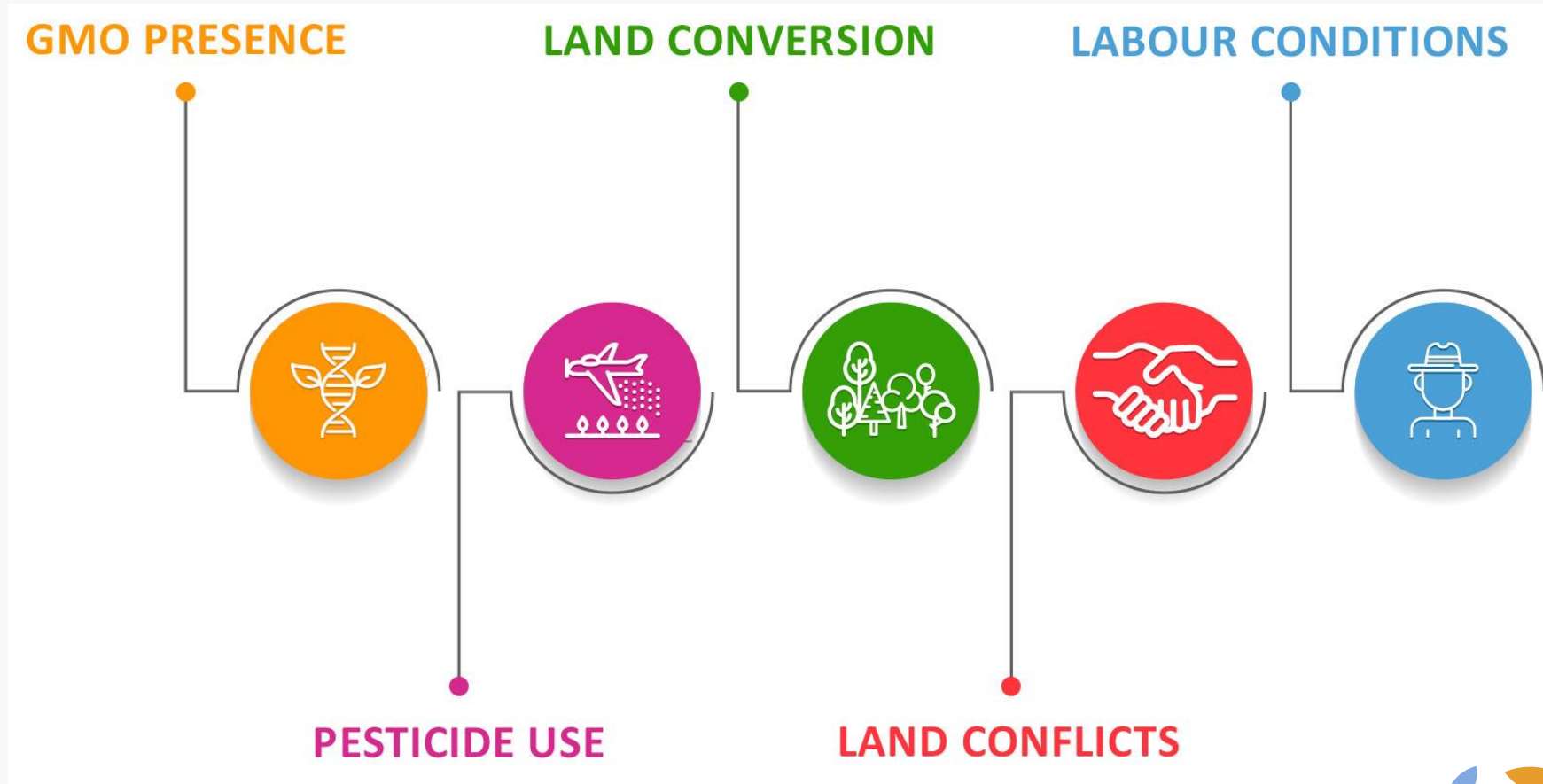
*Under the ProTerra Standard v5.0

The ProTerra Foundation

Benchmarks & Collaborations



ProTerra Standards to manage and mitigate risk



ProTerra Standards to manage and mitigate risk

An instrument for managing and mitigating ecological, social and environmental risks. Implementing robust standards means:

- ✕ Environmentally and ethically responsible raw materials within the supply chain that go beyond the minimum requirements of national legislation.
- ✕ Greater certainty for the company when making public claims, with traceability of materials throughout the value chain verified by external auditors.
- ✕ Contributing evidence to demonstrate that due diligence has been carried out within the supply chain to fulfil the new due diligence requirements.
- ✕ Improved knowledge of the origin of raw materials within the supply chain and therefore the regions over which they have the greatest influence and ability to influence.
- ✕ A clear indication of what is expected of suppliers and what they consider to be sustainable sourcing.



Benchmark EUDR vs ProTerra

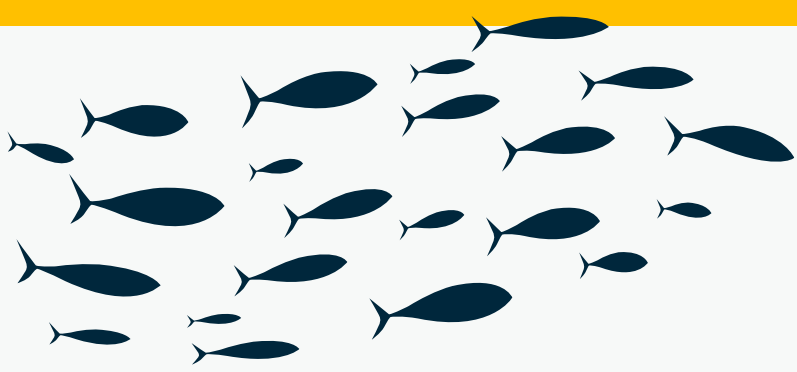


The ProTerra Standards have been benchmarked against the EU Regulation on deforestation-free commodities (EUDR).

More information can be found here:

- ✕ [MRV Standard benchmark against the EU Regulation on Deforestation-free commodities \(EUDR\)](#)
- ✕ [ProTerra Standard benchmark against the EU Regulation on Deforestation-free commodities \(EUDR\)](#)
- ✕ [Specific Guidance for the ProTerra Standard v5.0 to access compliance with the EUDR version 1.0](#)





PROTERRA STANDARD V5.0



ProTerra Standard Principles



PRINCIPLE 1: Management System, compliance with laws, international conventions and the ProTerra Standard

PRINCIPLE 2: Human rights and responsible labour policies and practices

PRINCIPLE 3: Responsible relations with workers and community

PRINCIPLE 4: Biodiversity conservation, effective environmental management and environmental services

PRINCIPLE 5: No use of Genetically Modified Organisms (GMOs)



PRINCIPLE 6: Pollution and waste management

PRINCIPLE 7: Water management

PRINCIPLE 8: Greenhouse gases and energy management

PRINCIPLE 9: Adoption of good agricultural practices



PRINCIPLE 10: Traceability and Chain of Custody

Levels of Certification

The ProTerra Certification is applicable to distinct levels of operation across the food and feed production chains:

 Level I: Agricultural Production

 Level II: Transport, Storage, Traders and Dealers

 Level III: Industrial Processing

It is also applicable to any agricultural product on a global scale

Scope of Certification

The ProTerra Certification can apply to:



Raw materials



Ingredients



Multi-ingredients products

This may be accomplished using two basic approaches, which have an impact on the organisation of the audit

Approaches

- ◈ **Each actor** in the food and feed supply chain **can be certified in its own right** against the applicable ProTerra Standard set of indicators (= each actor is subjected to individual certification audits)
- ◈ Certified organisations that **use inputs from actors that are not ProTerra certified** shall:
 - ✕ **implement systems to control;** and
 - ✕ **monitor its supply chain(s)** to ensure that the relevant ProTerra Standard indicators are met.

Land conflicts

- ❖ Certified organisations shall demonstrate clear title to land in accordance with national practice and law
- ❖ Respect land rights – FPIC (Free, prior and informed consent)



PRINCIPLE 1 - Management system, compliance with laws, international conventions and the ProTerra Standard

Labour conditions

- ◈ All workers should be treated with dignity and respect
- ◈ Absence of child labour
- ◈ Equal opportunities and treatment for workers
- ◈ Human and labour rights, comprehensive contracts
- ◈ Qualification, working experience and training of workers
- ◈ Wages and income, working time
- ◈ Health and Safety



PRINCIPLE 2 – Human rights and responsible labour policies, and practices.

Land conversion

- ❖ High conservation value areas (HCV 1 to 6) must not have been cleared or converted into agricultural areas, or used for industrial or other commercial purposes, after **31 December 2008**
- ❖ Identify, maintain and protect valuable biodiversity areas
- ❖ Farms must restore areas of agricultural vegetation related to sensitive ecosystems



PRINCIPLE 4 - Biodiversity conservation, effective environmental management and environmental services

GMO Presence

- ❖ GMOs are excluded from ProTerra Certification
- ❖ Traceability and segregation enable the market to have a full view over a product's journey, making it possible to identify if and where GMOs were used



PRINCIPLE 5 - No use of Genetically Modified Organisms (GMOs)

Pesticide use

- ❖ Reduce the use of toxic and polluting materials, especially pesticides
- ❖ Integrated Pest Management (IPM)
- ❖ Pesticides listed in the WHO classes Ia, Ib lists, Rotterdam Convention and Stockholm Convention, as well as pesticides forbidden by local, national, and regional law, shall not be used

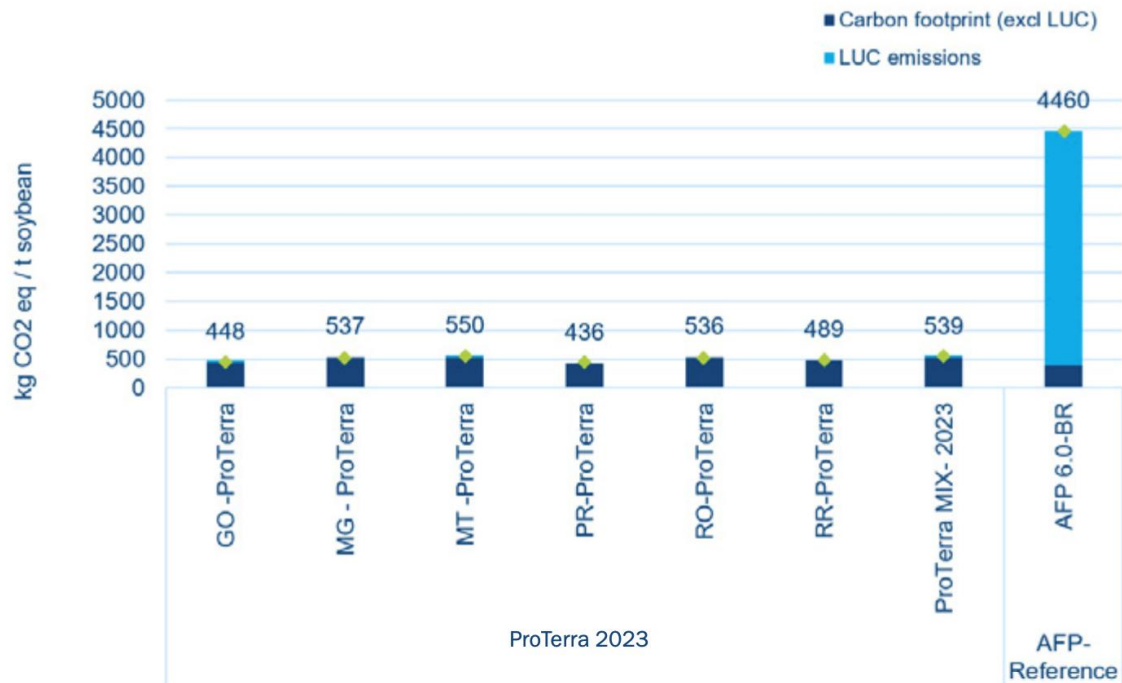


PRINCIPLE 9 - Adoption of good agricultural practices

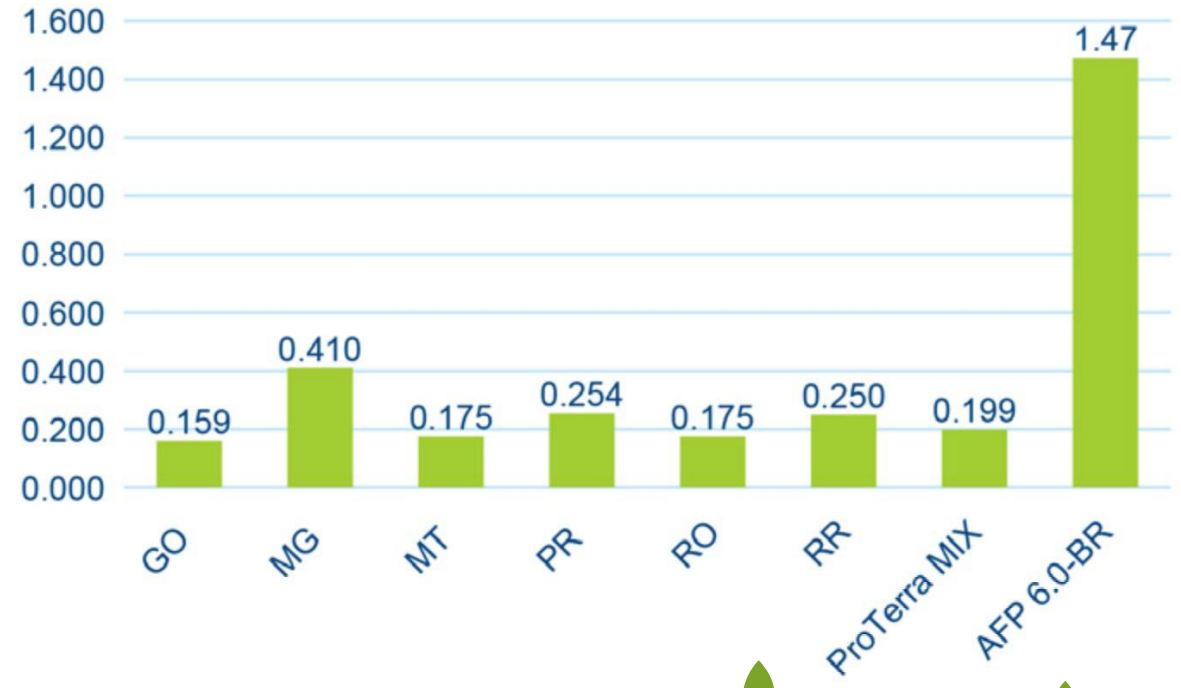
Reduce carbon and water footprint

Lower emissions and water consumption with ProTerra Standard certified-material

Carbon footprint soybean at farm



Water consumption



- ProTerra Certified Soy Environmental Footprint 2024
- ProTerra Certified Sugarcane Environmental Footprint 2024





MRV STANDARD

MONITORING AND VERIFICATION



MRV Standard

Legal and conversion-free supply chains

The ProTerra Monitoring and Verification (MRV) Standard provides a systematic approach to assess and verify an organisation's due diligence practices and supports reporting on supply chain due diligence and deforestation-free aspects.



<https://www.proterrafoundation.org/the-mrv-standard/>

MRV Standard

Commitment to:

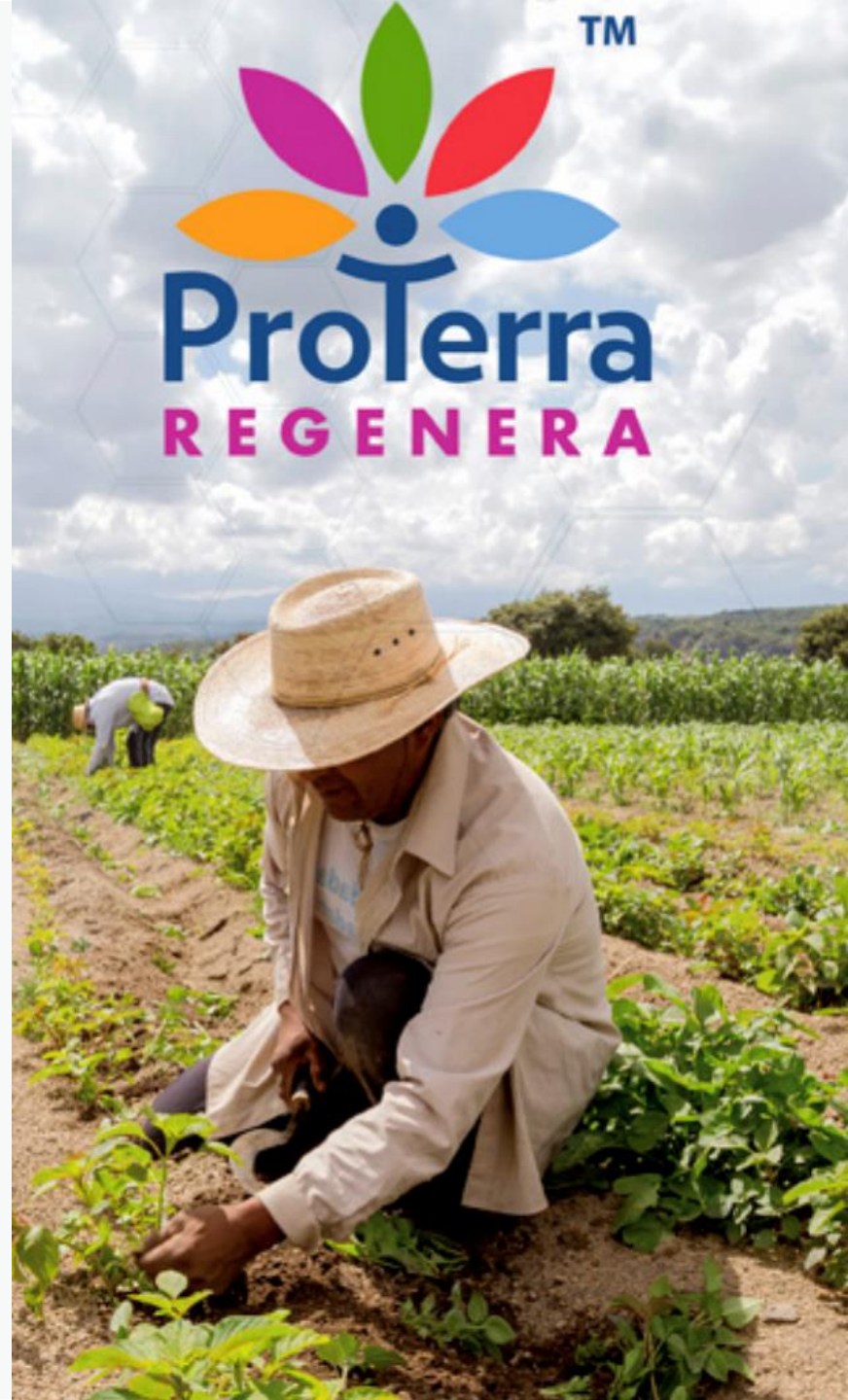
- ▶ Promote a raw material supply chain that is free from illegal and/or legal deforestation, and land-use change or conversion.
- ▶ Respect the rights of workers, indigenous peoples, and local communities.
- ▶ Ensure that sourcing is fully compliant with national and local environmental laws and regulations, as well as applicable international laws.
- ▶ Take affirmative actions to mitigate identified potential risks associated with commodities and related products or demonstrate that the risk is negligible.
- ▶ Assess risks by identifying the factual circumstances of their activities and business relationships and evaluate these facts against the environmental impacts, social impacts, and applicable national and international laws and standards.





PROTERRA REGENERA

ADD ON MODULE



ProTerra Regenera

The ProTerra Regenera is based on three Principles that are connected to the three key resources of any agricultural system:

A dark blue icon of a leaf or petal shape.

Soil

A dark blue icon of a leaf or petal shape.

Water

A dark blue icon of a leaf or petal shape.

Biodiversity

It is applicable to any agricultural product on a global scale. The ProTerra Regenera applies to agricultural level operators that have PT V5 or PT MRV. During the PT V5 or PT MRV audits, the Certification Body will conduct additional activities to verify compliance with ProTerra Regenera (add-on).



Benefits of joining ProTerra



Benefits of using ProTerra Standards



Improve sustainability and traceability, decrease risk (social, reputational, environmental, economical) within the supply chain



Demonstrate to buyer market a differentiated product, opening possibilities for new markets



Help to preserve biodiversity and valuable habitats for future generations



Implement one standard that is globally applicable for all crops and origins

Benefits of being part of the ProTerra Network

Being a Member of the ProTerra Network gives you the opportunity to accelerate your journey and increase the success of your continuous improvement program



ProTerra Network

Driving Sustainable Supply Chains



The ProTerra Network brings together organisations that are committed to a shared vision of sustainability throughout the entire supply chain.

Through collaboration, knowledge sharing, and strategic engagement, members play a crucial role in implementing sustainable practices.

Guidelines and Requirements for the Use of the ProTerra Logos and Seals

Types of Logos

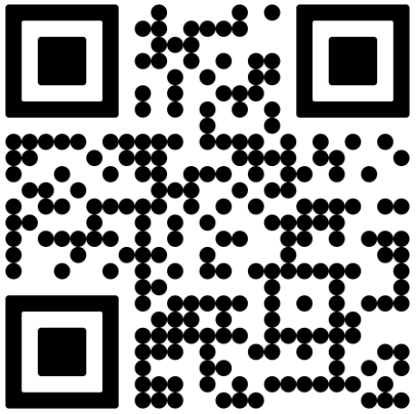
✦ B2B

- ✕ ProTerra Foundation Logo
- ✕ ProTerra Network Member Logo
- ✕ ProTerra Certification Logo

✦ B2C

- ✕ Product Labelling Logo





Have questions or want to learn more?
Visit us at: [Contact - ProTerra Foundation](#)

Connect on Social Media

 [/proterrafoundation01](#)

 [@proterrafoundation01](#)

 [/proterra-foundation](#)