



# ProTerra Standard V4.1





# Who we are

The ProTerra Foundation is a non-for-profit organization, located in the Netherlands.

We envisage a world where all businesses:

- Contribute to the protection of biodiversity by e.g. switching to non-GMO production
- Conserve natural resources and
- Ensure that workers and local communities are treated with dignity and respect

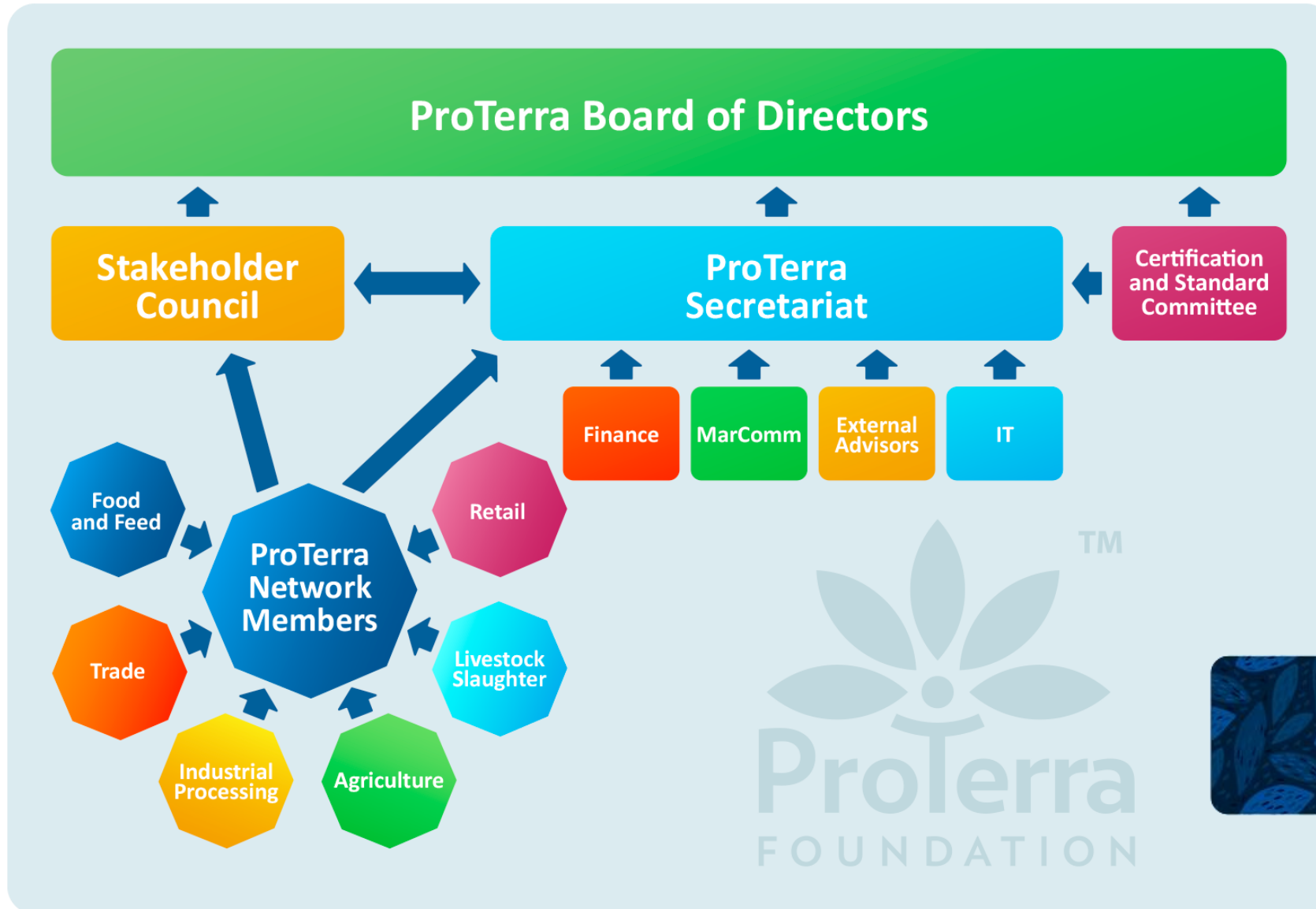


## Who we are

*ProTerra Foundation is the owner of Voluntary Sustainability Standard:*

### ***ProTerra Standard V4.1***

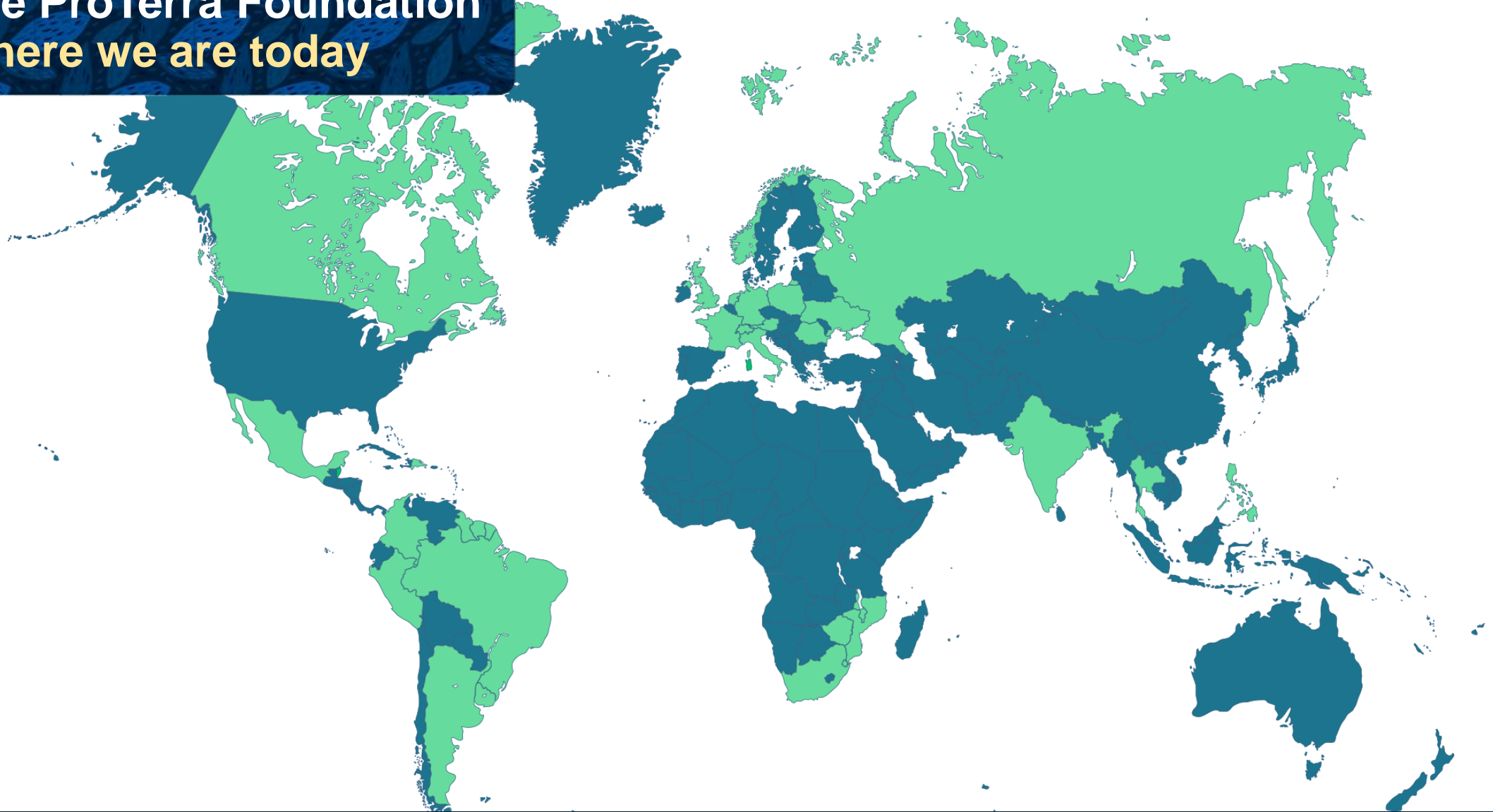
*The standard is specialized in promoting social and environmental sustainability through the food and supply chains*



Who we are

# The ProTerra Foundation

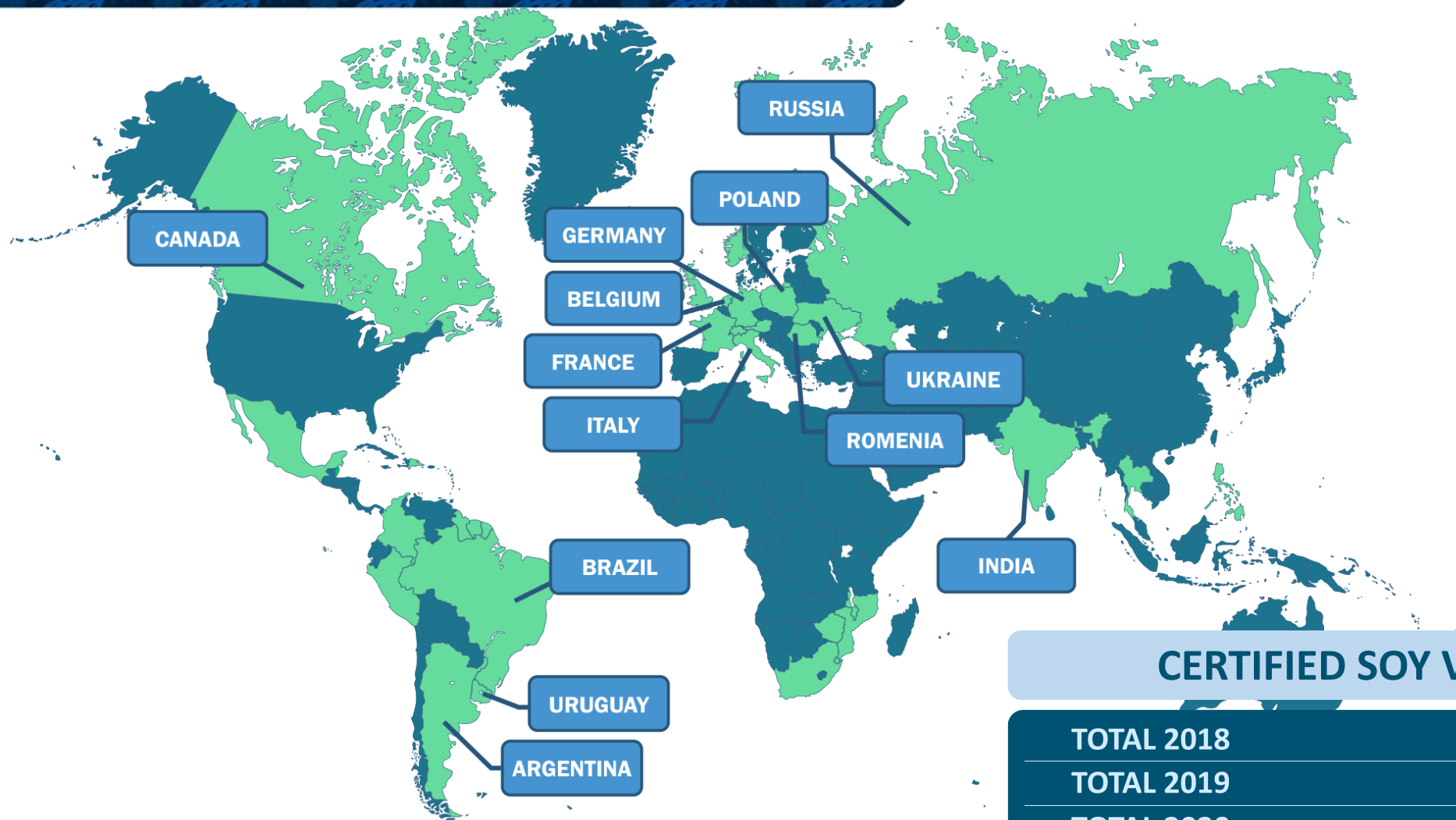
## Where we are today



Argentina, Austria, Belgium, Belize, Brazil, Canada, Colombia, Eswatini, Germany, Dominican Republic, France, Guadelupe, Guyana, India, Italy, México, Malawi, Mozambique, Netherlands, Norway, Peru, Philippines, Poland, Romania, Russia, South Africa, Switzerland, Thailand, Ukraine, United Kingdom, Uruguay and Zimbabwe.

# The ProTerra Foundation in numbers

## SOY 2020



### CERTIFIED SOY VOLUME

|            |              |
|------------|--------------|
| TOTAL 2018 | 3.511.000,00 |
| TOTAL 2019 | 2.988.373,87 |
| TOTAL 2020 | 3.032.171,39 |

# The ProTerra Foundation in numbers

## SUGARCANE 2020



■ verification  
■ certification

| SUGARCANE ANNUAL CRUSH (mt) |               |       |               |       |               |
|-----------------------------|---------------|-------|---------------|-------|---------------|
| 2018                        |               | 2019  |               | 2020  |               |
| ■                           | 8.197.722,00  | ■     | 15.445.465,75 | ■     | 27.182.377,44 |
| ■                           | 6.196.524,00  | ■     | 5.853.695,16  | ■     | 7.836.268,00  |
| Total                       | 14.394.246,00 | Total | 21.299.160,91 | Total | 35.018.645,44 |





# Requirements of the Standard





# Standard Principles



PRINCIPLE 1 - Compliance with law and the ProTerra Standard

PRINCIPLE 2 - Human rights and responsible labour policies and practices

PRINCIPLE 3 - Responsible relations with workers and community



PRINCIPLE 4 – Biodiversity conservation, effective environmental management and environmental services

PRINCIPLE 5 - No use of Genetically Modified Organisms (GMOs)

PRINCIPLE 6 - Pollution and waste management

PRINCIPLE 7 - Water Management

PRINCIPLE 8 - Greenhouse gases and energy management

PRINCIPLE 9 – Adoption of good agricultural practices



PRINCIPLE 10 - Traceability and Chain of Custody

## Levels of Certification

The ProTerra Certification is applicable to distinct levels of operation across the food and feed production chains:

- **Level I:** Agricultural production
- **Level II:** Transport, Storage, Traders and Dealers
- **Level III:** Industrial Processing



It is also applicable to any agricultural product, globally



## Scope of Certification

**The ProTerra Certification can apply to:**

- **raw materials**
- **ingredients or multi-ingredient products**

This may be accomplished using two basic approaches, which have an impact on the organisation of the audit

## Approaches

**Each actor** in the food and feed supply chain **can be certified in its own right** against the applicable ProTerra Standard set of indicators (= each actor is subjected to individual certification audits)

**OR**

Certified organisations that use inputs from actors that are not ProTerra certified shall:

- **implement systems to control and**
- **monitor its supply chain(s)** to ensure that the relevant ProTerra Standard indicators are met





# Supply Chain Risks



# Use the ProTerra Standard to manage and mitigate risks

GMO PRESENCE

LAND CONVERSION

LABOUR CONDITIONS



PESTICIDE USE

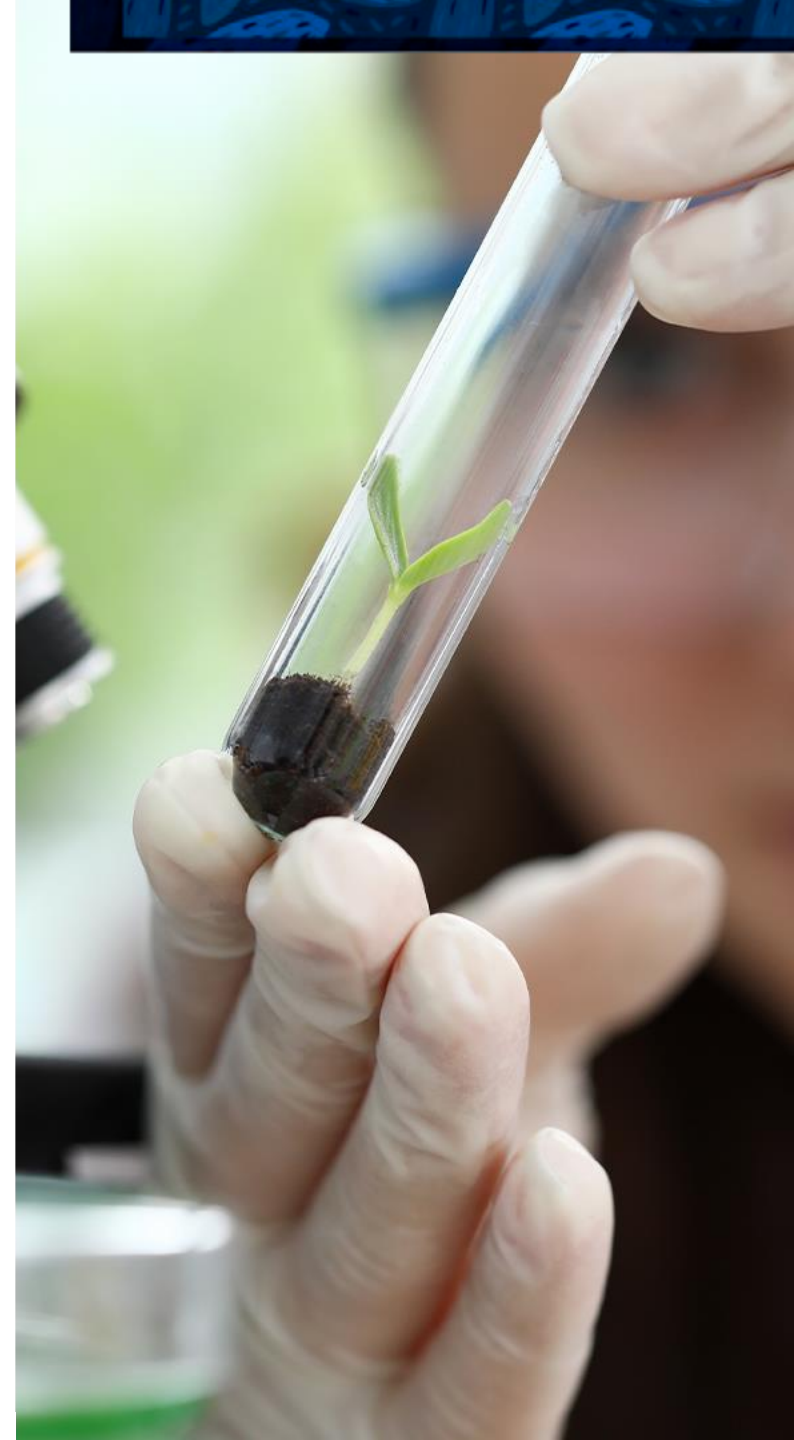
LAND CONFLICTS





## GMO presence

- GMOs are excluded from ProTerra Certification
- Traceability and segregation enable the market to have a full view over a product's journey, making it possible to identify if and where GMOs were used





## Pesticide use

- Reduce the use of toxic and polluting materials, especially pesticides
- Integrated Pest Management (IPM)
- Pesticides listed in the WHO classes Ia, Ib lists, Rotterdam Convention and Stockholm Convention, as well as pesticides forbidden by local, national, and regional law, shall not be used

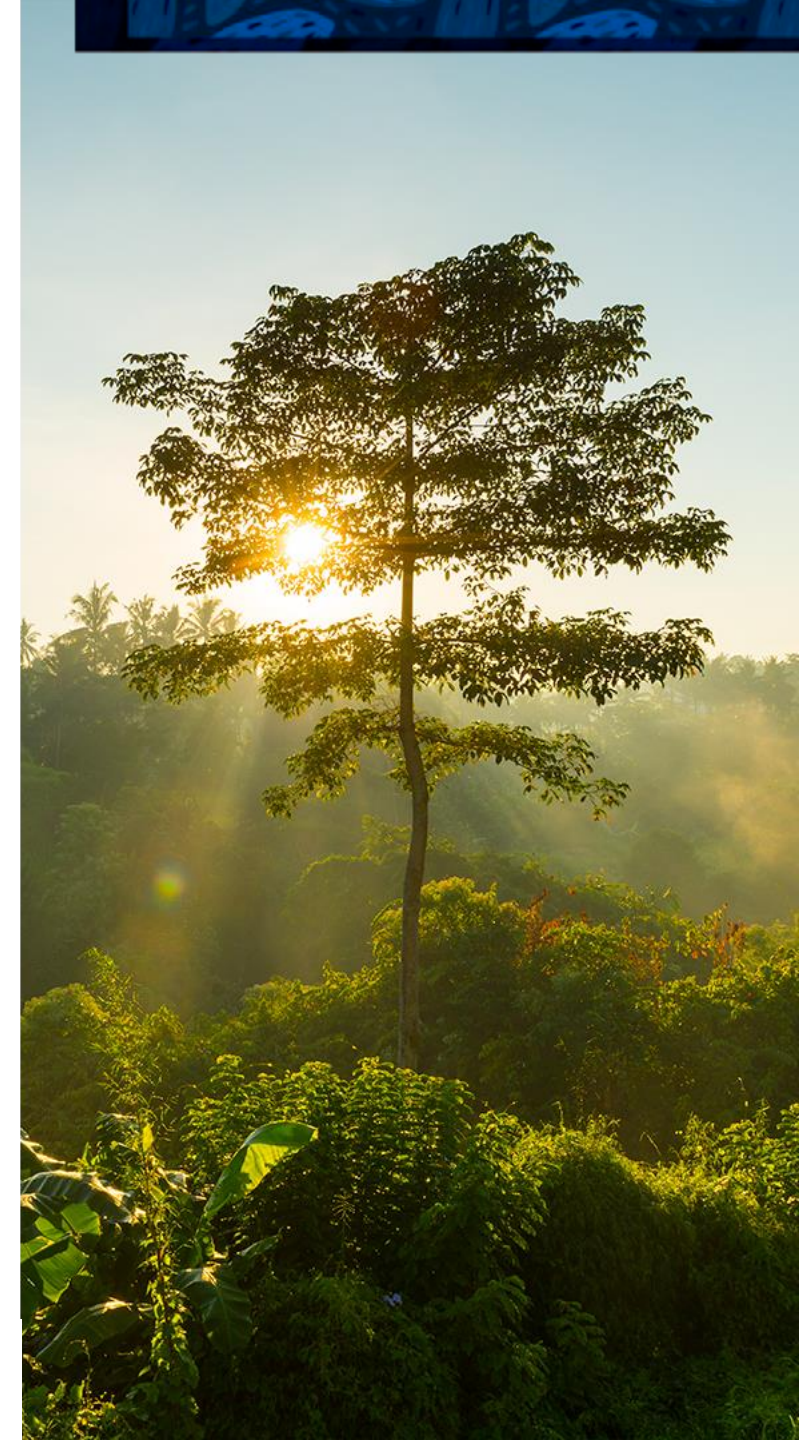






## Land conversion

- Areas of native vegetation (incl. HCVA) cannot have been cleared or converted into agricultural areas, or used for industrial or other commercial purposes, **after 2008**
- Identify and maintain valuable biodiversity
- Farms must restore areas of natural vegetation related to sensitive ecosystems







## Land conflicts

- Certified organisations shall demonstrate clear title to land in accordance with national legislation
- Respect land rights - FPIC (free, prior and informed consent)







## Labour conditions

- All workers should be treated with dignity and respect
- Absence of child and forced labour
- Equal opportunities and treatment for workers
- Human and labour rights, comprehensive contracts
- Qualification, working experience and training of workers
- Wages and income, working time
- Health and safety







# Benefits of certifying against ProTerra



# Benefits of certifying against ProTerra



Improve sustainability and traceability, decrease risk (social, reputational, environmental, economical) within the supply chain



Demonstrate to buyer market a differentiated product, opening possibilities for new markets



Help to preserve biodiversity and valuable habitats for future generations



Implement one standard that is globally applicable for all crops and origins



# Benefits of being a part of the ProTerra Network

Being a Member of the ProTerra Network gives you the opportunity to accelerate your journey and increase the success of your continuous improvement program



# ProTerra Labelling under ProTerra



## Guidelines and Requirements for the Use of the ProTerra Logos and Seals

### Types of Logos:

- B2B
  - ProTerra Network Member logo
  - ProTerra Certification and Verification Logos
- B2C
  - Product labelling



**Emese van Maanen**  
**Managing Director**

**emese.vanmaanen@proterrafoundation.org**  
**Tel: +31 6 83 29 28 52**  
**Skype: brosz.emese**

**Alexia Stumpf**  
**Administrative Manager**

**alexia.stumpf@proterrafoundation.org**  
**Tel: +35 191 5874439**  
**Skype: alexia.stumpf**

