



The ProTerra Standard Version 4.1

Our Vision

The ProTerra Foundation is a non-for-profit organization.

We envisages a world where:

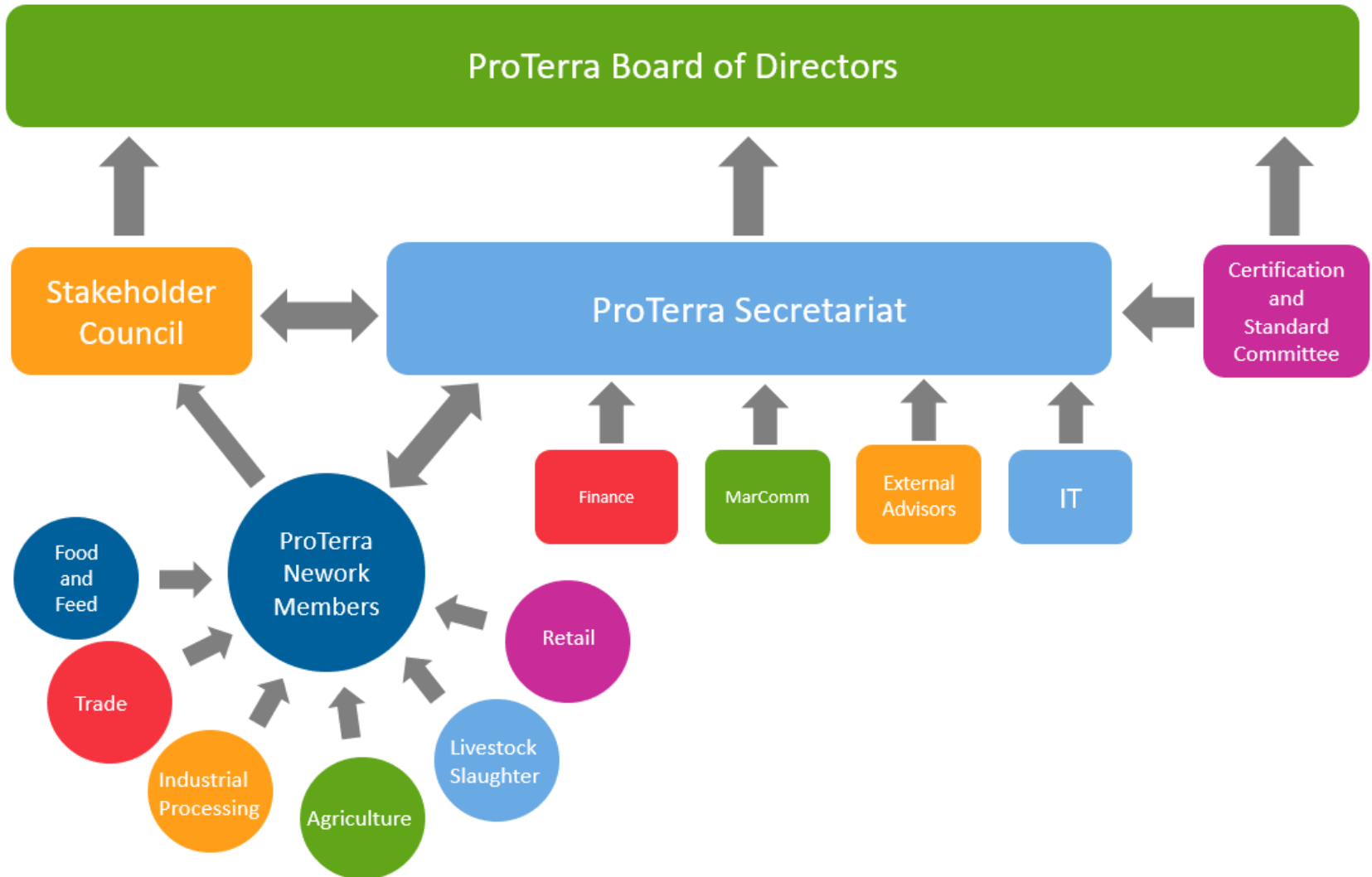
- all businesses contribute to the protection of biodiversity by e.g. switching to non-GMO production
- conserve natural resources and
- ensure that workers and local communities are treated with dignity and respect.



Who we are

Voluntary Sustainability Standard owner,
specialized in promoting social and
environmental sustainability through the food
and supply chains

Who are we



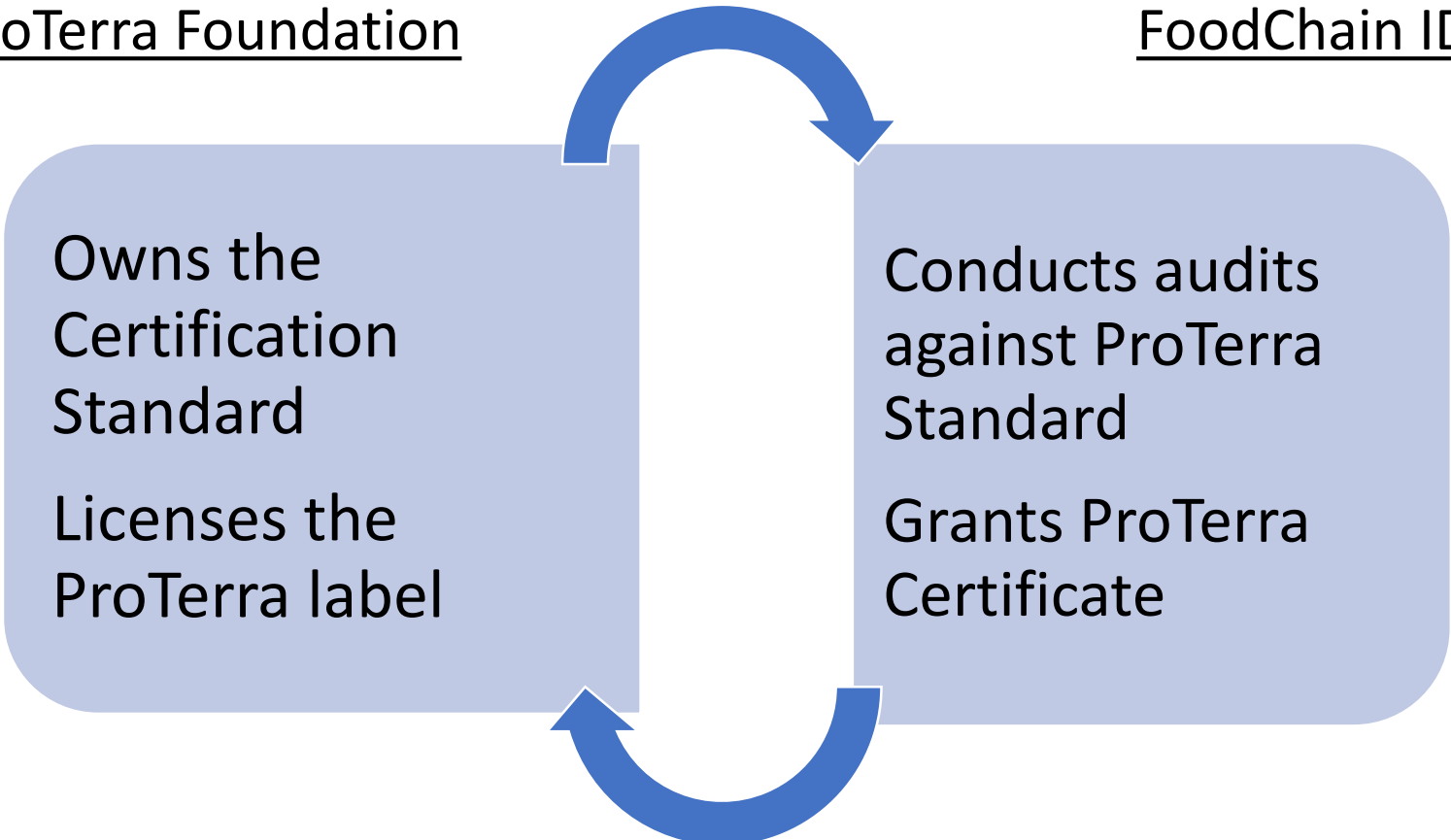
How do we work

ProTerra Foundation

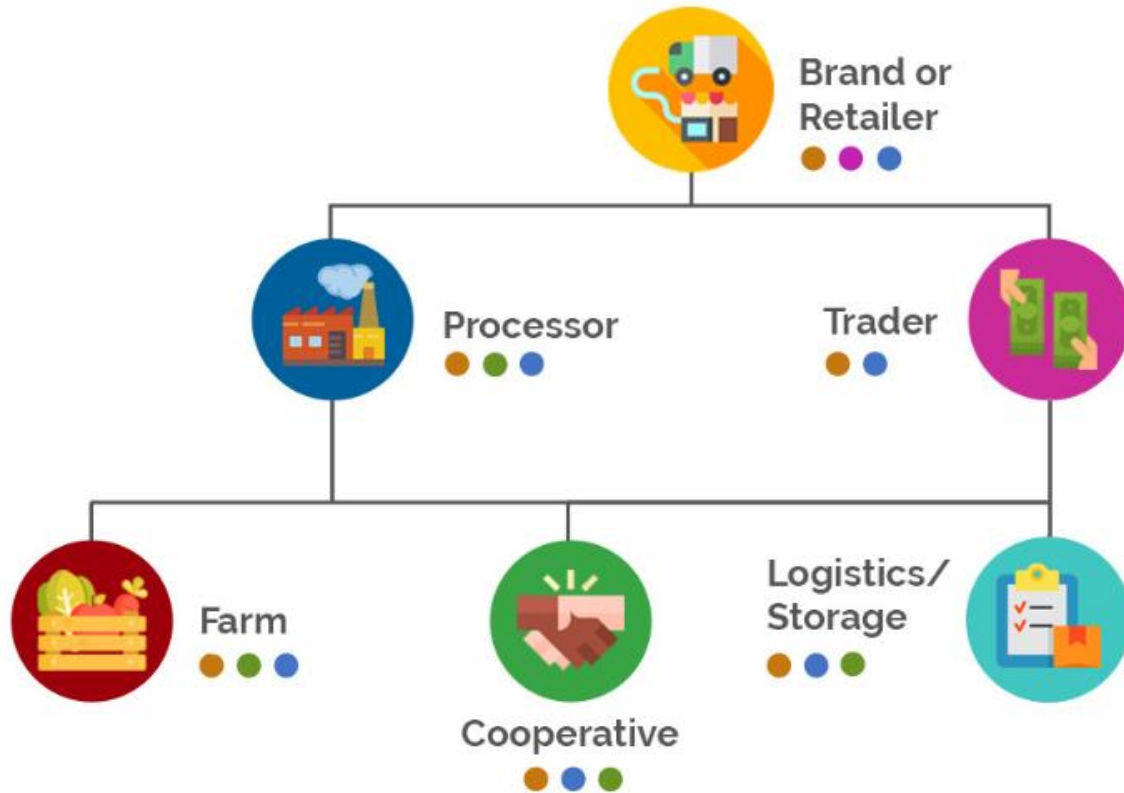
Owens the
Certification
Standard
Licenses the
ProTerra label

FoodChain ID

Conducts audits
against ProTerra
Standard
Grants ProTerra
Certificate



Who is who in the PT supply chain



● ProTerra Network member

● Certified

● Label license

● Sampled audited

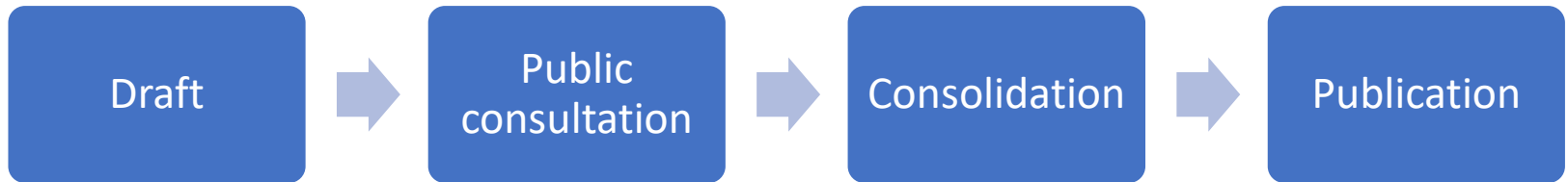
Why do we work with commodities

These represent a sustainability risk in the food supply chains:

- Deforestation
- Land conflicts – Indigenous People Rights
- Labour conditions – forced labour
- Pesticide misuse, including illegal and forbidden in EU

New Certification Standard

Revision process milestones



What is next

In 2019

Till 30th May: All FoodChain ID auditors trained

May - Dec: Companies can request for in-house and class room trainings

1st January 2020: All audits are conducted against new Standard.

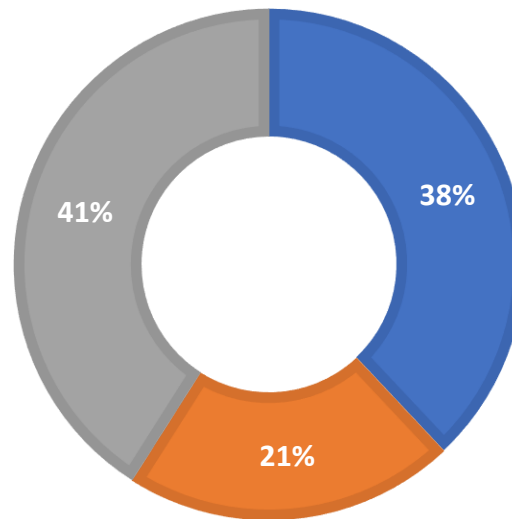
Major impact in auditors training

- Supply chain monitoring
- Modern Slavery – detection, reporting and remediation
- Right of indigenous peoples and forest-dependent communities of free, prior and informed consent
- Six High Conservation Values – Identification and protection
- Gene-edited organisms in agriculture: unexpected risks

New Standard - 2019

ORIGIN OF THE CHANGE

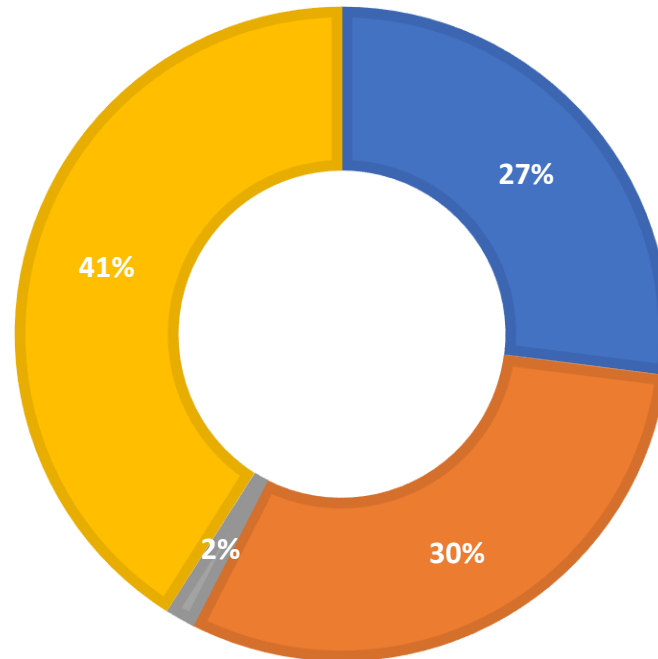
■ Stakeholders request ■ Internal feedback ■ Kept as version 3



New Standard - 2019

TYPE OF CHANGE

■ Edits and rephrasing ■ Requirements modification (CORE) ■ New aspects ■ No modification



Scope of Certification

OLD

- Level I – Agricultural production
- Level II – Transport, Storage
- Level III – Industrial Processing
- Chain of Custody

NEW!

- Level I – Agricultural production
- Level II – Transport, Storage,
Traders and Dealers
- Level III – Industrial Processing

Chain of Custody is removed from Scope because it is covered under Principle 10

Traceability and Chain of Custody

- It applies to all different levels of operation aiming for certification.
- Those organizations in Level II are to be audited against:
 - Principle 10 - Traceability and Chain of Custody
 - Those indicators that make specific reference to Level II
 - Principle 5 – No use of Genetically Modified Organisms (GMOs)

Standard Principles



PRINCIPLE 1 - Compliance with law and the ProTerra Standard

PRINCIPLE 2 - Human rights and responsible labour policies and practices

PRINCIPLE 3 - Responsible relations with workers and community

PRINCIPLE 4 – Biodiversity conservation, effective environmental management and environmental services



PRINCIPLE 5 - No use of Genetically Modified Organisms (GMOs)

PRINCIPLE 6 - Pollution and waste management

PRINCIPLE 7 - Water Management

PRINCIPLE 8 - Greenhouse gases and energy management

PRINCIPLE 9 – Adoption of good agricultural practices



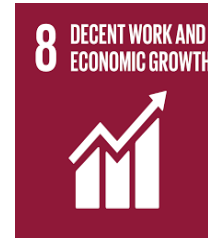
PRINCIPLE 10 - Traceability and Chain of Custody

Principle 1: Compliance with the law and the ProTerra Standard



- 1.1. Comply with all applicable national and local laws, regulations, and applicable international conventions - (5 core indicators)
- 1.2. Continuous improvement
- 1.3. Use of ProTerra logo, seal, trustmark and certificates

Principle 2: Human Rights and responsible labour policies and practices



- 2.1. Absence of slave and forced labour, child labour, and coercive disciplinary or control methods
- 2.2. Weekly working hours and overtime
- 2.3. Personnel Management Programme
- 2.4. Equal opportunities and treatment for workers
- 2.5. Workers' working and living conditions
- 2.6. Clear and comprehensive labour contracts and legal rights

Principle 2: Human Rights and responsible labour policies and practices

2.7. Qualification, working experience and training of workers

2.8. Salaries, payments and benefits

2.9. Safety and health of workers protected

2.10. Training in health and safety

2.11. Parental leave

2.12. Freedom for workers to organize, join and form associations

Principle 3: Responsible relations with workers and community



- 3.1. Systems of communication and grievance mechanism
- 3.2. Land use does not impair the rights of traditional other users
- 3.3. Economic development and support to local economy

Principle 4: Biodiversity conservation, effective environmental management and environmental services



- 4.1. Land use and forest conservations
- 4.2. Maintenance and enrichment of biodiversity
- 4.3. Social and environmental impact assessment and management plan

Principle 5: No use of Genetically Modified Organisms (GMOs)



5.1. GMOs and Genetically Engineered Organisms are excluded

5.2. System of Identity Preservation and segregation



This principle is only applicable for crops and products with risk to be GMO – See Annex A

In a way, Annex A represents step 1 before applying for certification.

Principle 6: Pollution and waste management



6.1. Appropriate management of hazardous wastes and pollutant materials

6.2. Management and appropriate disposal of non-hazardous wastes

6.3. Control of atmospheric pollution

Principle 7: Water management



- 7.1. Conservation of natural water resources
- 7.2. Best practices for water management

Principle 8: Greenhouse gases and energy management



- 8.1. Management of greenhouse gas emissions
- 8.2. Management of energy use

Principle 9: Adoption of good agricultural practices



- 9.1. Systems of good practices
- 9.2. Control of burning
- 9.3. Soil and crop management
- 9.4. Documentation of agricultural production
- 9.5. Management of propagation material
- 9.6. Reduction of toxic and polluting materials
- 9.7. Management of agrochemicals and chemical residues

Principle 10: Traceability and Chain of Custody

- 10.1. Chain of Custody System
- 10.2. Mass balance
- 10.3. Segregated chain of custody



Thank you!

Emese Brosz

+31 6 83 29 28 52

Emese.brosz@protterrafoundation.org