



# Newsletter



- [The importance of soy in crop rotation](#)
- [ProTerra's engagement with the Amsterdam Declarations Partnership](#)
- [What are HCVs?](#)
- [Information Sharing: Environmental Footprint of Soy - Life Cycle Assessment \(LCA\)](#)

## Personal note – from the Managing Director

Dear Colleagues, Business Partners, Members and Friends,

During our work we often discuss challenges we face, new commitments, ways to deal with new situations, but nobody was expecting such a significant change that affects everyone so quickly. Within a few days it changed our everyday life, social contacts, the way we work and how we conduct our business.

Among many others, the 5th International non-GMO Conference has been postponed and many international meetings take place online. We are exploring new ways to communicate and continue our discussions. It will never replace personal exchange of information, but avoids putting important projects on hold.

ProTerra is proactively contacting businesses and customers to help them navigate the challenges and uncertainty generated by coronavirus (COVID-19), we continue to be at your service.

The ProTerra Team wishes you good health and all the best for you and your loved ones!

Emese Brosz, Managing Director



---

## The importance of soy in crop rotation



Soy is a great plant, not only due to its composition, but by inserting it in our crop rotation, soy creates agronomic advantages too.

[Read more about the importance of soy in crop rotation →](#)

---

## ProTerra's engagement with the Amsterdam Declarations Partnership



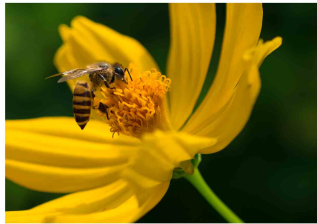
The Amsterdam Declarations (ADs) were launched in 2015 in the context of the Paris Climate Agreement and built on the New York Declaration on Forests' (NYDF) commitments, with the goal to emphasize “the global importance to preserve primary forests and high conservation value areas, amongst others through responsible supply chain management”

[Read more about ProTerra's engagement with the ADP→](#)

---

## What are HCVs?



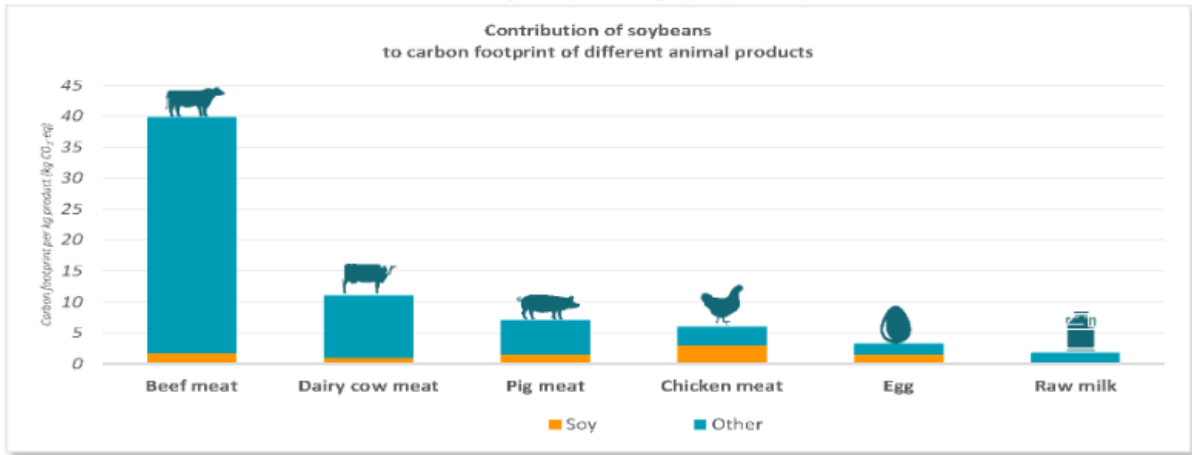


Nature offers mankind many services we sometimes do not realize. These include for example the provision of raw materials (e.g. wood, sand) and energy that are used by us to produce goods and value-added services. Nature also serves us in the removal of waste from our activities, for example, and provides us with leisure's opportunities and social spaces. These are called environmental services (services that are provided to us by nature).

[Click here to read more about HCVs →](#)

---

## Information Sharing: Environmental Footprint of Soy - Life Cycle Assessment (LCA)



We would like to share with you this very informative pamphlet, prepared by Blonk Consultants, in the context of a Collaborative Soy Initiative (CSI) .

[Click here to read more →](#)



Sent by **ProTerra Foundation**  
Sent by ProTerra Foundation Our mailing address is: Stichting ProTerra Foundation | Jan Steenlaan 5A | Bilthoven  
3723 BS | The Netherlands  
If you wish to unsubscribe, please [click here](#).